



SIDDHIVINAYAK
SIGNATURE CITY

TALOJA

SANKALP

UNLOCK THE TRANQUIL LUXURY



SIDDHIVINAYAK
HOMES

A signature of trust

Rera: A52000046516

+91 70453 17389/ +91 77387 75114



MahaRERA Registration No: **P52000052663** | Available at maharera.mahaonline.gov.in

Disclaimer: The information, specification, amenities, layout, picture etc shown/contained in this brochure are indicative only. The Builder/Developer shall not be liable, responsible, obligated and/or required to provide any/all such amenities, specifications etc. as contained in this brochure. All plans, drawings, information, specification, amenities etc are subject to approval from local government authorities and Municipal Corporation. The Builder/Developer shall have irrevocable and unconditional right to change, delete, substitute, alter, subtract, add, amend etc. the said plan, drawing, information, specifications, amenities, layout etc. in such manner as the Builder/Developer may deem fit. No right of nature whatsoever shall be constructed and/or deemed to have accrued in favour of any person and/or purchaser of the premises hom or by virtue of this brochure. The Builder/Developer shall not be liable and/or responsible for any loss, damages, cost, expenses suffered/incurred and/or likely to be suffered and /or incurred by any person and/or purchasers of the premises. No person or purchaser of the premises shall have any right to be entitled claim or enforce any right based on this brochure.

THE FINEST LIFESTYLE WRAPPED IN SERENE SYMPHONY

Welcome to Siddhivinayak Sankalp, an exclusive residential gem within Siddhivinayak Signature City Township, conveniently located near Pendhar Metro Station in Taloja. Offering a harmonious blend of upscale living and the serenity of untouched nature bliss, it promises a life where residents seamlessly connect with both new age lifestyle and futuristic connectivity.

PROJECT HIGHLIGHTS

- G+15 Storey Towers
- Spacious 1 & 2 Bed Apartments
- Grand Entrance Lobby
- Privilege of Township Living
- G+2 Storey Clubhouse
- Swimming Pool & Kids Pool
- 24X7 Security Surveillance



GRAND CLUBHOUSE UNITES WITH NATURE'S BLISSFUL CANVAS

Explore a wealth of amenities at our lavish clubhouse, including modern leisure choices, communal spaces for social gatherings, and an endless recreation to pursue your passion, all crafted to enrich your lifestyle.

- G+2 CLUBHOUSE
- SERENE LANDSCAPED GARDEN



Artist's Impression



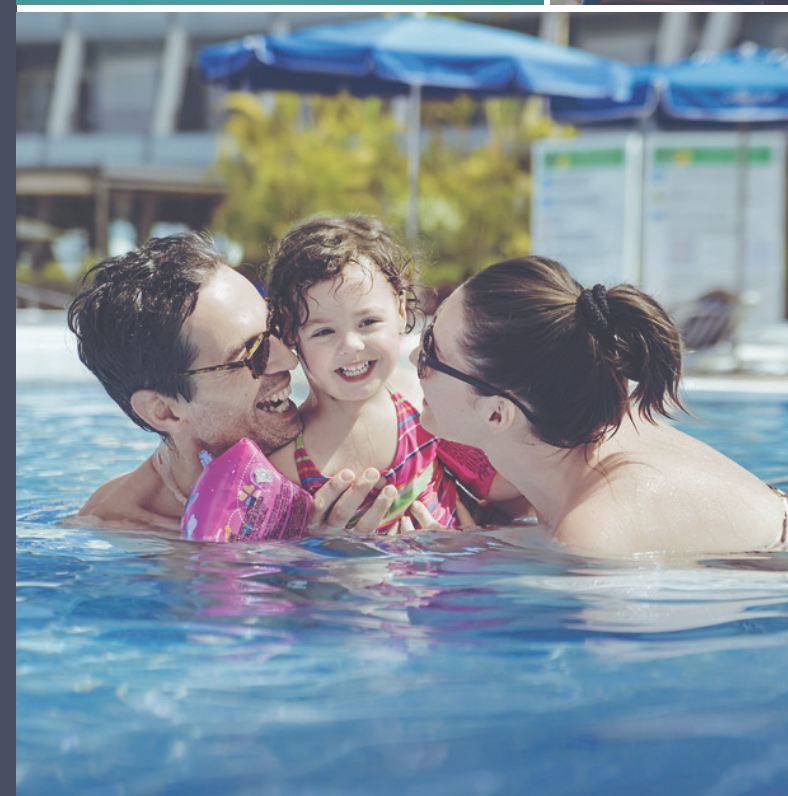
Artist's Impression

A WORLD DESIGNED TO CREATE EXCEPTIONAL MOMENTS

Experience an elevated lifestyle at Siddhivinayak Sankalp, where upgraded amenities redefine your living experience. Stay fit and energized in the hi-tech gymnasium. Immerse yourself in the serenity of the landscape garden and pursue your passion amidst the grand clubhouse, here you have many choices to make your everyday truly fulfilling.

UPGRADED AMENITIES

- G+2 Storey Clubhouse
- Banquet Hall
- Indoor Games
- Fully Equipped Gym
- Swimming Pool With Kids Pool
- Jacuzzi
- Children's Play Area
- Senior Citizen Sit-outs
- Landscaped Garden



PRECISELY PLANNED LIVING EXPERIENCE

- Air-Conditioned Homes
- Digital Main Door Lock
- Natural Light and Ventilation



Living Room



Bedroom



Kitchen



Washroom

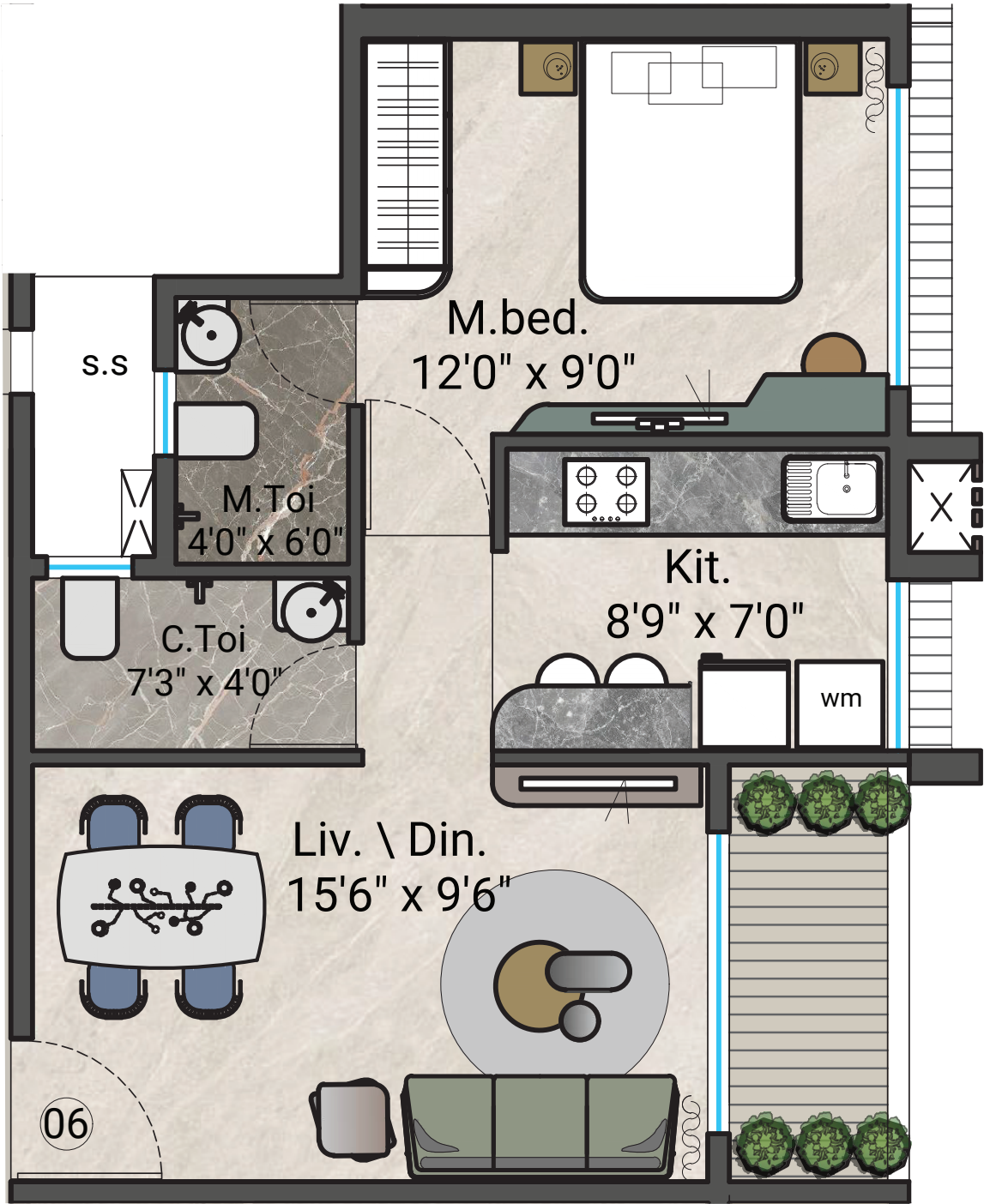
A WING TYPICAL FLOOR PLAN



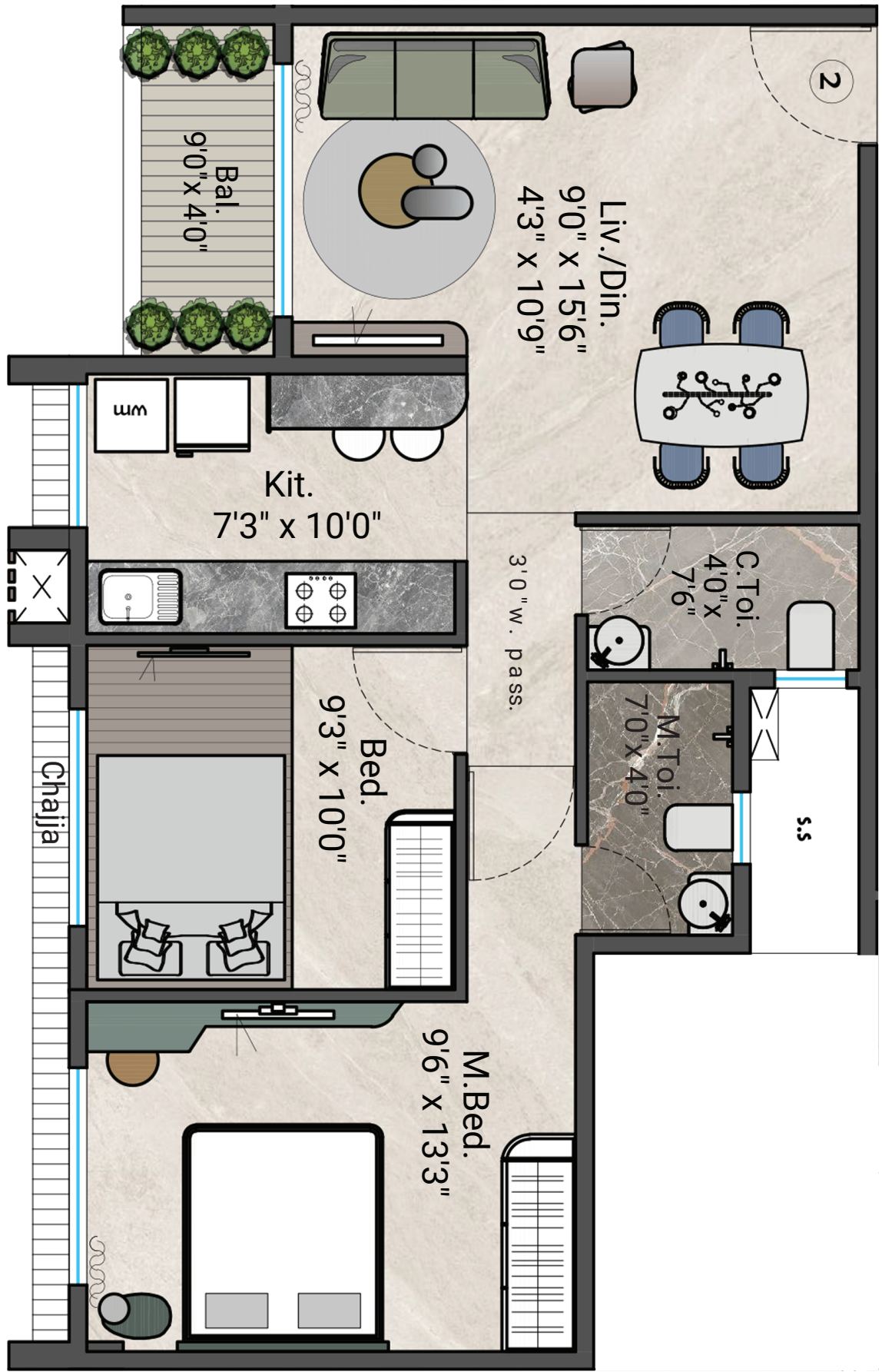
B WING TYPICAL FLOOR PLAN



1 BHK UNIT PLAN



2 BHK UNIT PLAN



CONNECTIVITY MAXIMIZED TO MAKE EVERY JOURNEY COMFORTABLE



CONNECTIVITY

- Pendhar Metro Station
- Taloje Panchanand Railway Station
- Mumbai-Pune Expressway
- National Highway 48



HOSPITALS

- Tata Memorial Hospital
- Medicovert Hospitals
- Mitr Hospital



EDUCATION

- Bharati Vidyapeeth
- ITM Business School
- NMIMS School of Hospitality Management
- BD Somani International School
- Vibgyor School
- DAV International School



TEMPLE

- Siddhivinayak Temple
- ISKCON Temple



RECREATION

- Kharghar Golf Course
- Kharghar Football Stadium



UPCOMING INFRASTRUCTURE

- Creek flyover to Kharghar
- Kharghar-Turbhe Link Road (KTLR)
- BKC 2 Corporate Hub
- D B Patil International Airport
- Mumbai Trans Harbour Link (MTHL)

